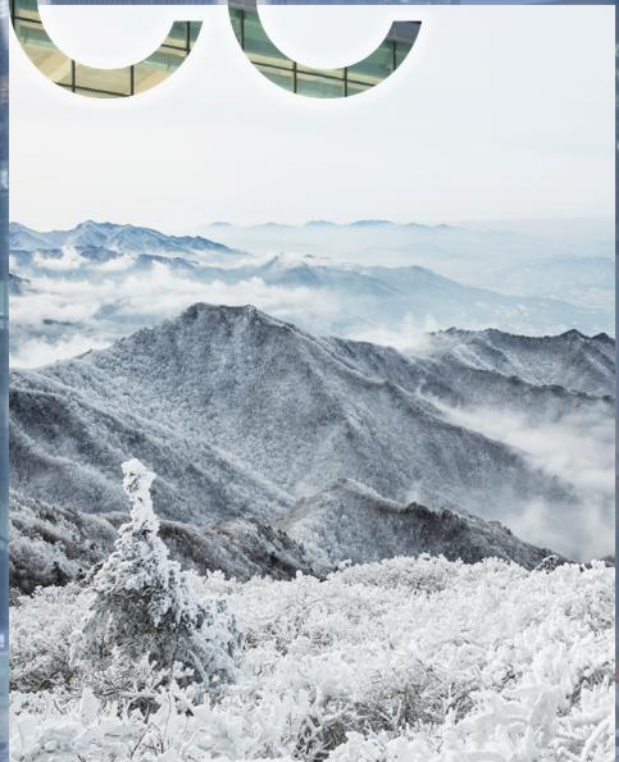




APCC
APEC CLIMATE CENTER

Climate Outlook

Issued: 19 February 2026



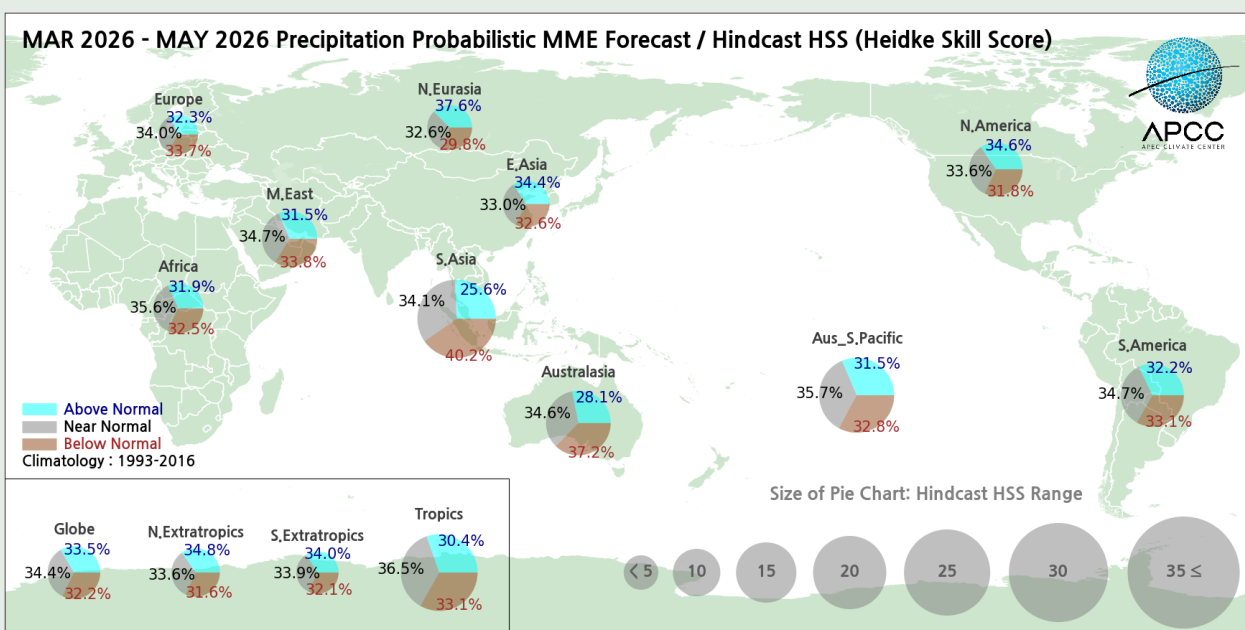
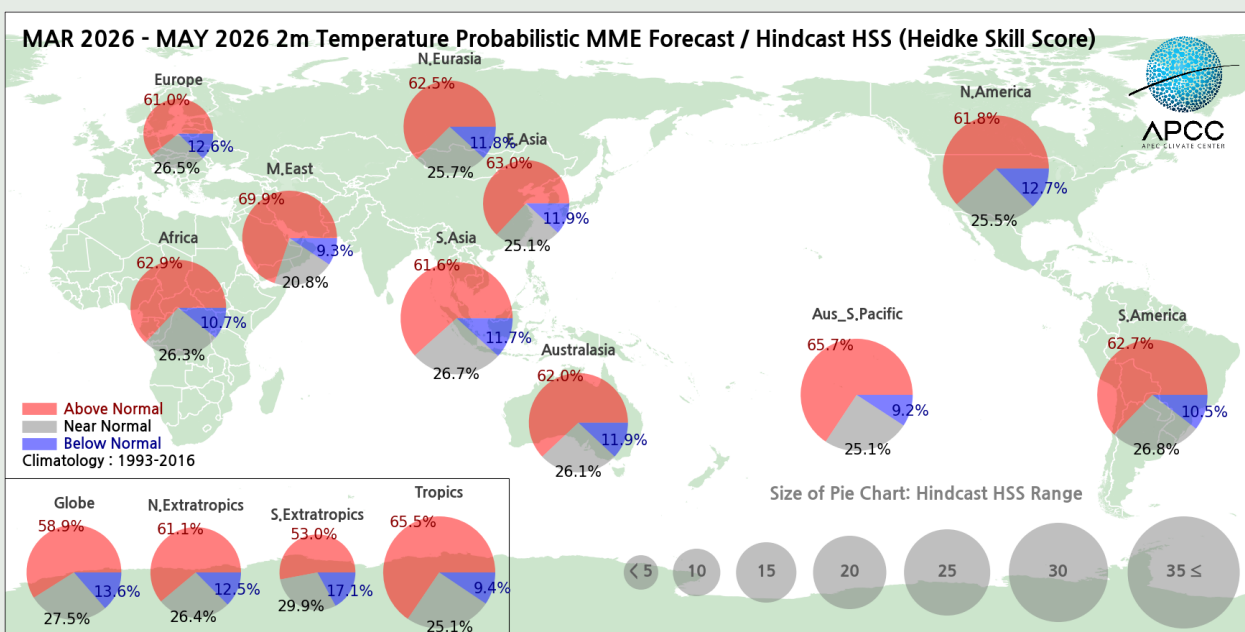
APEC Climate Center

12 Centum 7-ro, Haeundae-gu, Busan, 48058, Republic of Korea

Tel: +82 51 745 3900 Fax: +82 51 745 3949, www.apcc21.org

March - May 2026

- The APCC ENSO Alert suggests “El Nino WATCH”. El Nino is expected to develop in the coming seasons.
- Above normal temperatures is mostly probable for the globe except for the some parts of southern tropical Ocean.
- Above normal precipitation is predicted for the tropical north Pacific and subtropical southwestern Pacific, eastern end of equatorial Pacific. Below normal precipitation is predicted for the Maritime continents, off-equatorial south Pacific, northwestern Pacific for March — May. During June — August 2026, above normal precipitation is expected for equatorial and western north Pacific. Below normal precipitation is expected for the east Africa, southwestern tropical Indian ocean, India, Maritime Continents, central off-equatorial south Pacific, central and northern South America.



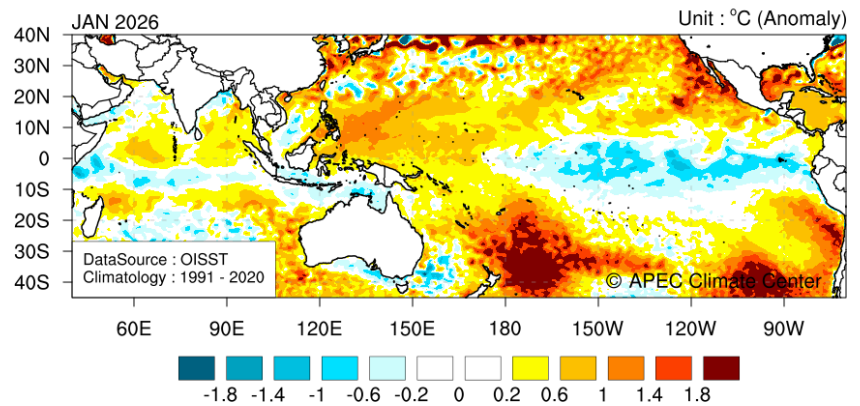
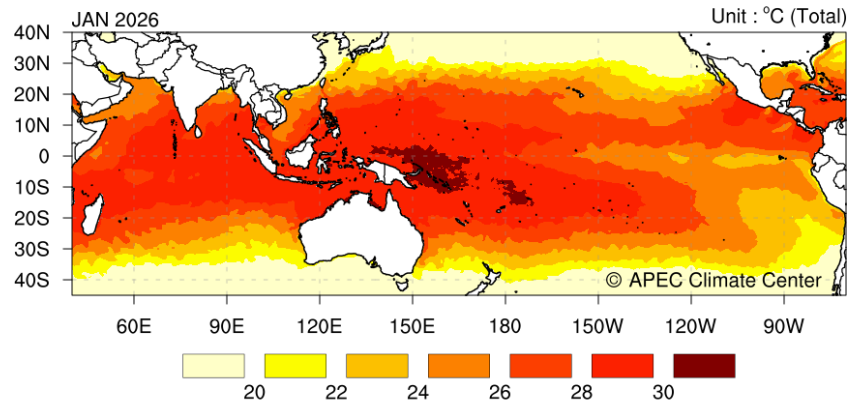
Summary of probabilistic MME forecasts of 2m temperature (top) and precipitation (bottom) and hindcast skill scores for March - May 2026.

The information for June - August 2026 is available at <http://www.apcc21.org/prediction/global/outlook?lang=en>.

Current Climate Conditions

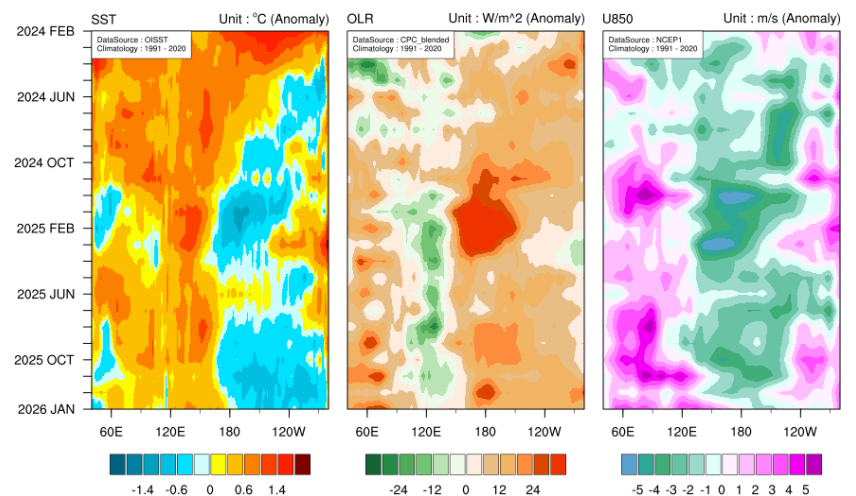
- In January 2026, negative sea surface temperature (SST) anomalies at the central to eastern equatorial Pacific remains but slightly weakened.
- At the equator, the area of cold SST anomaly near dateline and adjacent OLR anomalies were reduced. Whereas westerly wind anomaly at the western Pacific is expanded and strengthened.
- Positive monthly mean temperature anomalies were observed over the Arctic sea, Greenland, far Eastern Russia, northwest Africa, western Canada, Australia and some region of western South America. Below normal temperature anomalies were observed at most of Europe, Russia, East Asia, eastern USA.
- Above normal precipitation was observed over southern Europe, some parts of central and southern Africa, tropical north Pacific, tropical southwest Pacific, northwestern South America. Below normal precipitation was over the some parts of southern Africa, southern China, equatorial Indian Ocean, Maritime continents and northern Australia, and most of eastern south America.

Sea Surface Temperature



The observed sea surface temperatures (SSTs; top) and anomalies (bottom) for January 2026

Sea Surface Temperature / Outgoing Longwave Radiation / U-wind at 850hPa

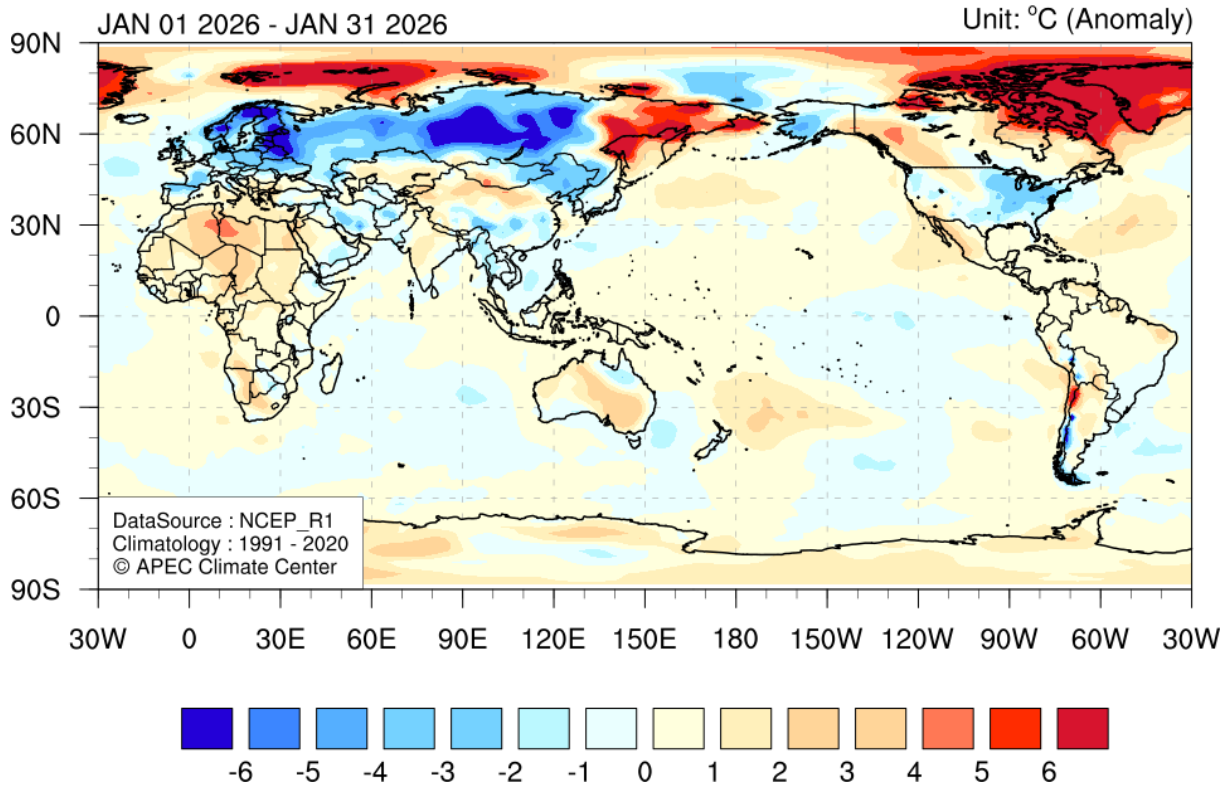


* Anomalies are averaged between 5°S and 5°N.

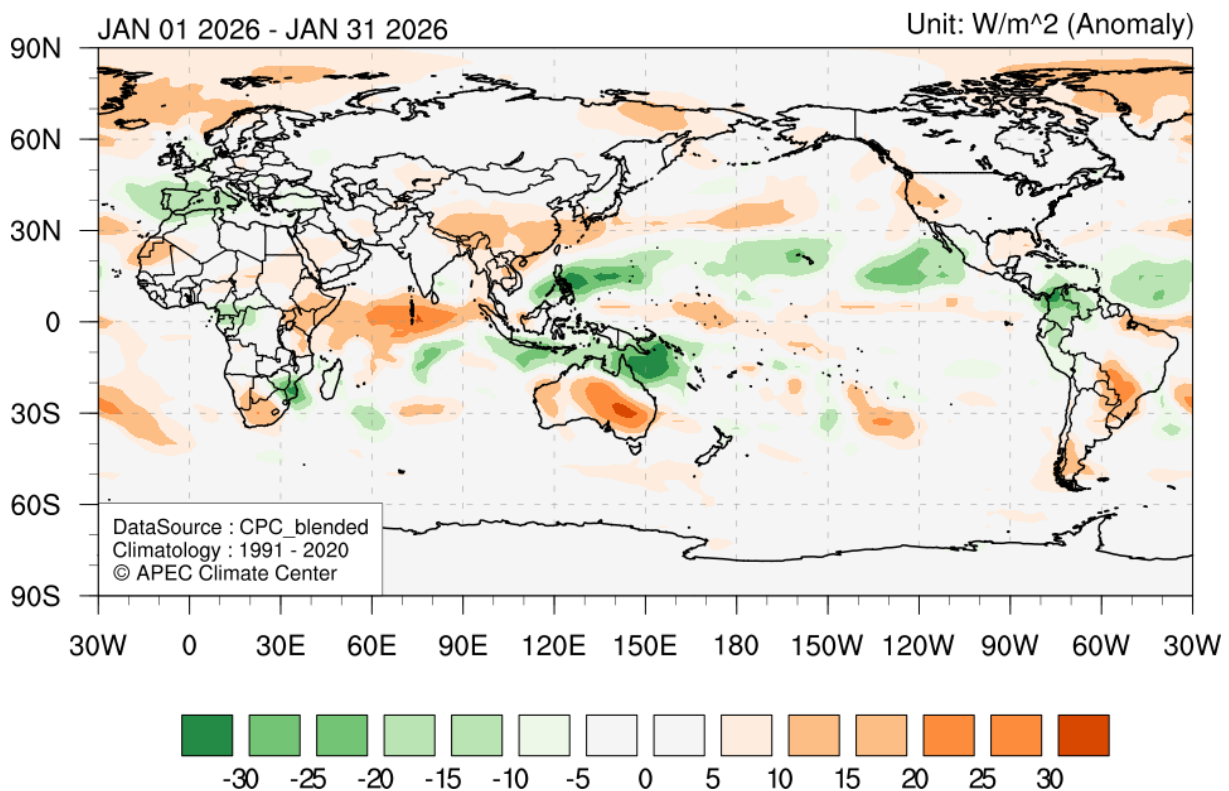
Time-longitude cross section of the observed sea surface temperature (SST), outgoing longwave radiation (OLR), and zonal wind at 850hPa (U850) anomalies along the equator (5°S-5°N) in the Indian and Pacific Oceans (40°E-80°W) for February 2024 – January 2026.

Current Climate Conditions

Temperature at 2m



Outgoing Longwave Radiation

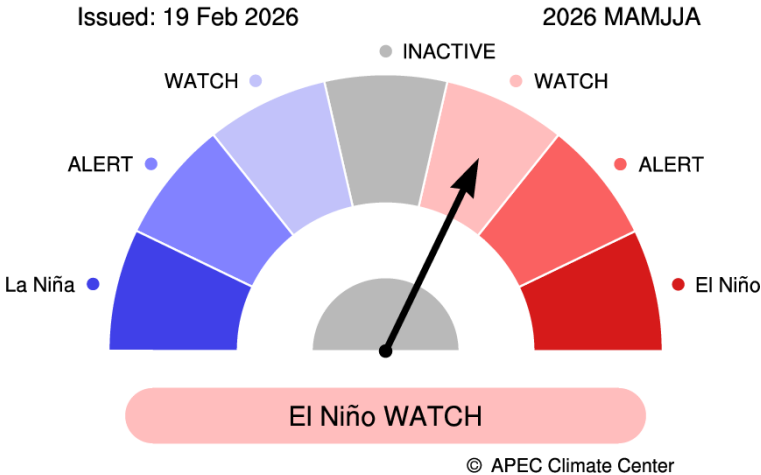


The observed 2m temperatures (top) and OLR anomalies (bottom) for January 2026.

March - August 2026

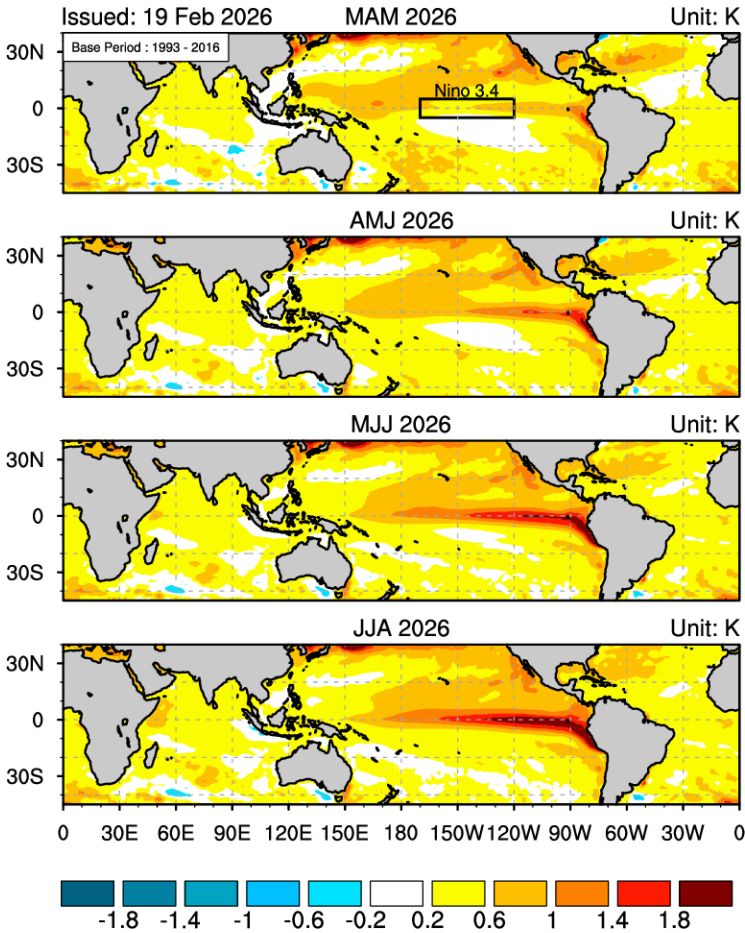
- The APCC ENSO outlook suggests “El Nino WATCH”.
- Positive SST anomalies are expected along the equator for March – August 2026 with indications of developing El Nino.
- Niño3.4 index is expected to be 0.13 °C for March 2026 and then rapidly increase up to 1.49 °C in August 2026.
- ENSO neutral conditions are most probable with 60.3% of chance during the early forecast period but transition to El Nino is expected with El Nino probability of 90.6% in the later part of forecast period.

ENSO Alert System



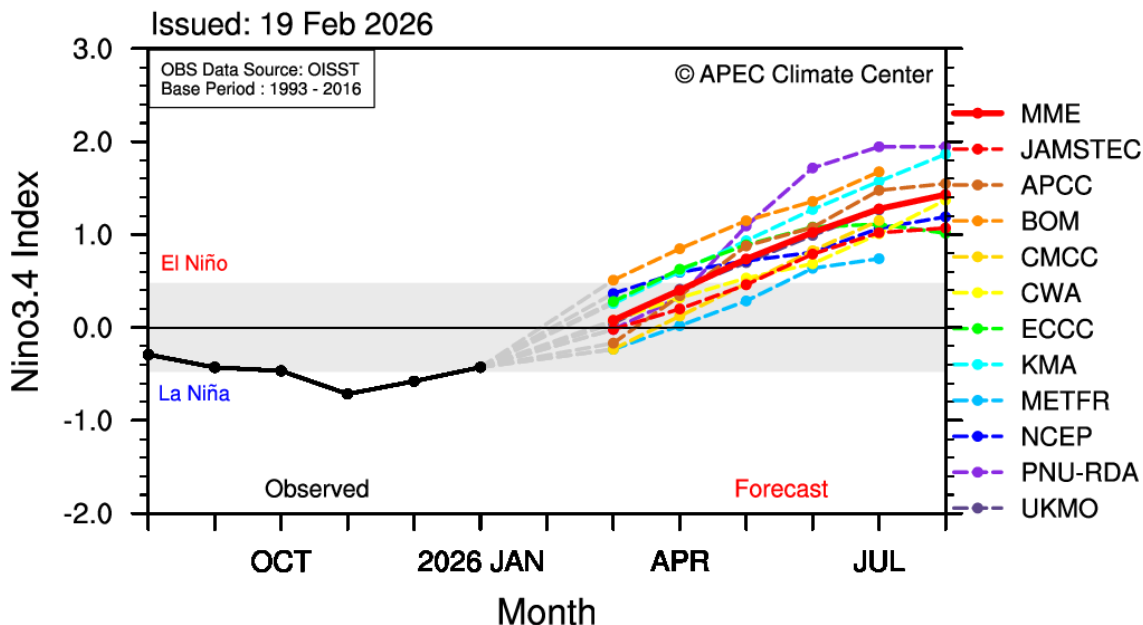
The APCC ENSO Alert status for March - August 2026. Anomalies are computed with respect to the common base period (1993-2016) of participating models in the APCC MME prediction. Observed data used for the recent three months is the Optimum Interpolation Sea Surface Temperature (OISST). Effective from April 2022, ENSO alert information will be updated twice (around the 15th and 30th) each month to reflect the latest observation.

SST Anomaly for MAM-JJA 2026

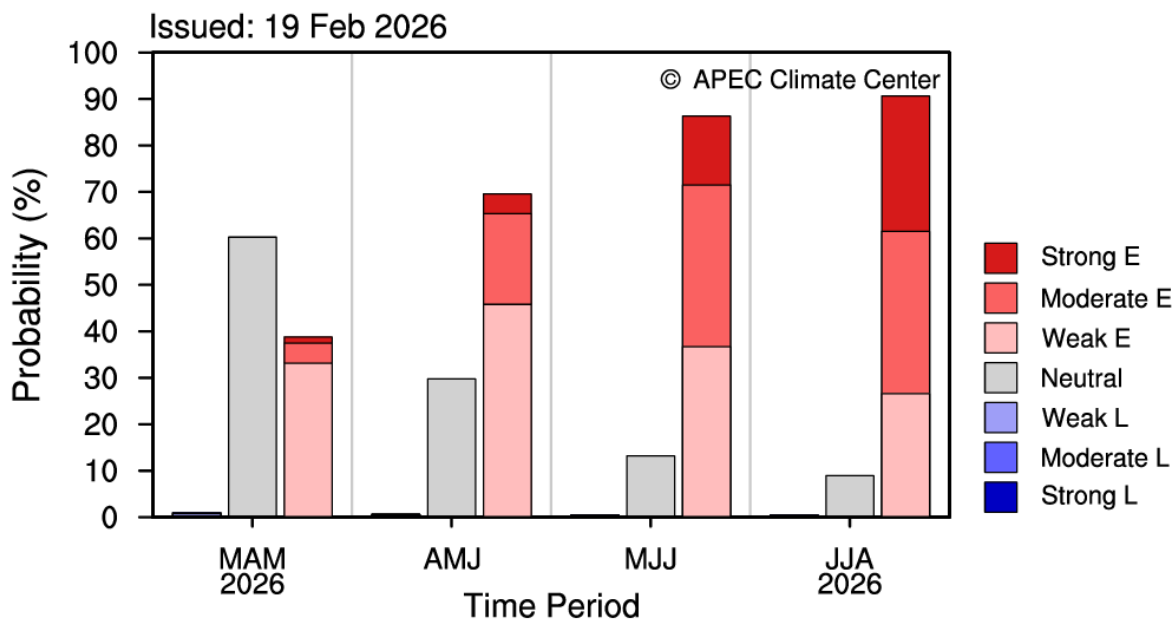


Multi-model ensemble (MME) forecasts of SST anomalies for March - August 2026. Anomalies are computed with respect to the common base period (1993-2016) of participating models in the APCC MME prediction.

Nino3.4 Index for 2026 MAMJJA



Probabilistic ENSO Forecast for 2026 MAMJJA



* ENSO Intensity based on 3M Mean Nino3.4 SST Anomaly (Category Boundaries: +/-1.5, 1.0, 0.5°C)

Predicted Niño3.4 index from individual models and the MME for March - August 2026 (top). Probabilistic MME forecasts of the status and intensity based on Niño3.4 index for four overlapping 3-month mean periods (bottom). Anomalies are computed with respect to the common base period (1993-2016) of participating models in the APCC MME prediction.

March - May 2026

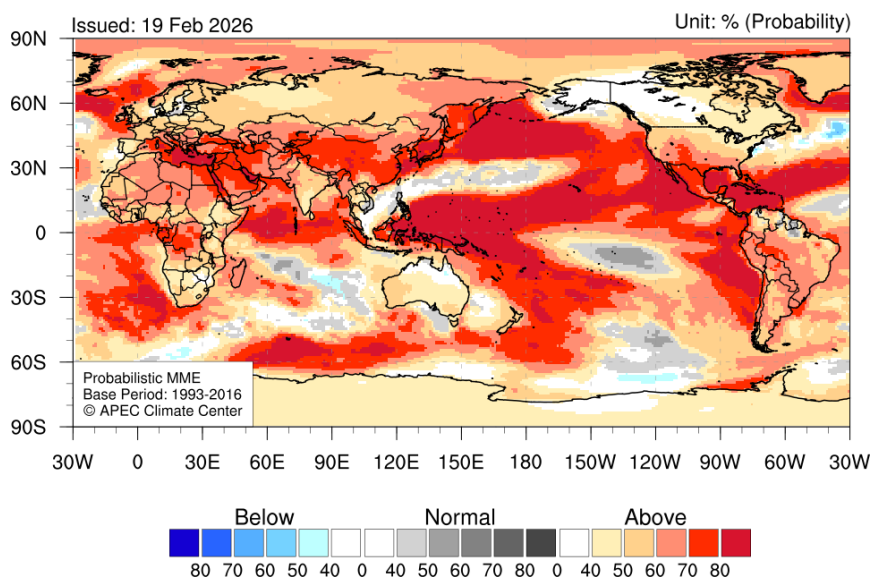
Temperature

- Strongly enhanced probability for above normal temperatures is predicted for the **northeastern Atlantic, Mediterranean, central Africa, Middle East, Equatorial Indian Ocean, eastern East Asia and north Pacific, tropical North Pacific and southwest Pacific, Caribbean, Mexico, subtropical North Atlantic, southeastern South Pacific and central South America**. Enhanced probability for above normal temperatures is expected for **Europe, Arctic sea, Russia, Greenland, Central Asia, North Africa, western Australia, USA, central and most of South America**. A tendency for above normal temperatures is expected for **most of Australia, eastern Canada**.
- Enhanced probability for near normal temperatures is predicted for the **central subtropical south Pacific, subtropical southern Indian Ocean**.
- Enhanced probability for below normal temperatures is predicted for south **a part of north Atlantic**.

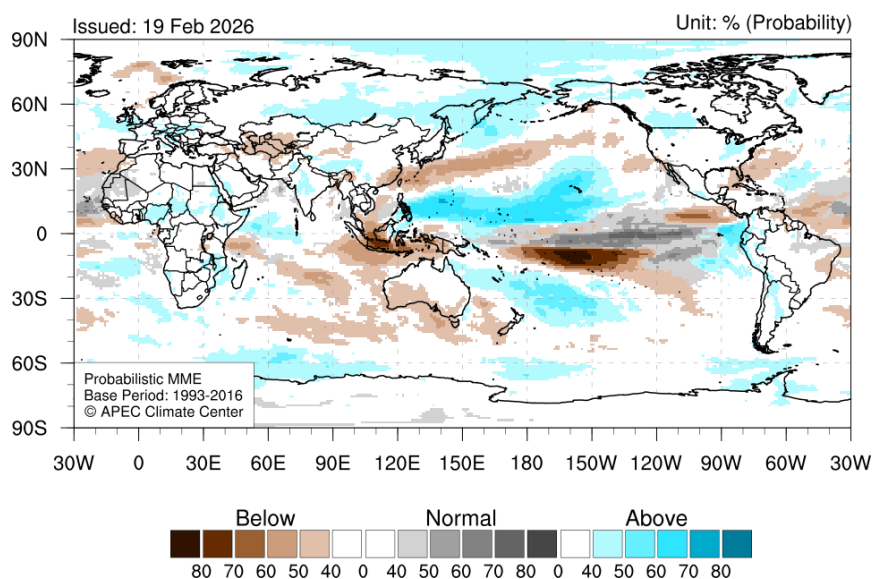
Precipitation

- Enhanced probability for above normal precipitation is predicted for **subtropical North Pacific and eastern end of equatorial Pacific**. A tendency for above normal precipitation is expected for **India, Arctic, Russia, central Africa, southwestern Pacific**.
- Enhanced probability for near normal precipitation is predicted for the **central to eastern equatorial Pacific, and coast of western north Africa**.
- Strongly enhanced probability for below normal precipitation is predicted for **the central off-equatorial South Pacific and some part of Maritime continents**. Enhanced probability for below normal precipitation is expected for **Eastern equatorial Indian Ocean, western and central North Pacific, off-equatorial eastern pacific**. A tendency for below normal precipitation is predicted for **the south Indian Ocean, western Australia, central Asia, tropical western Atlantic and extratropical western Atlantic**.

Temperature at 2m for March-May 2026



Precipitation for March-May 2026



Probabilistic MME forecasts of 2m temperature (top) and precipitation (bottom) for March - May 2026. Normal conditions are computed with respect to the common base period (1993-2016) of participating models in the APCC MME prediction.

Temperature		Precipitation
70% < probability	Strongly enhanced probability for above normal temperatures/precipitation	70% < probability
50% < probability < 70%	Enhanced probability for above normal temperatures/precipitation	50% < probability < 70%
40% < probability < 50%	A tendency for above normal temperatures/precipitation	40% < probability < 50%
70% < probability	Strongly enhanced probability for near normal temperatures/precipitation	70% < probability
50% < probability < 70%	Enhanced probability for near normal temperatures/precipitation	50% < probability < 70%
40% < probability < 50%	A tendency for near normal temperatures/precipitation	40% < probability < 50%
70% < probability	Strongly enhanced probability for below normal temperatures/precipitation	70% < probability
50% < probability < 70%	Enhanced probability for below normal temperatures/precipitation	50% < probability < 70%
40% < probability < 50%	A tendency for below normal temperatures/precipitation	40% < probability < 50%

Probabilistic MME forecasts of APCC is described as above

June - August 2026

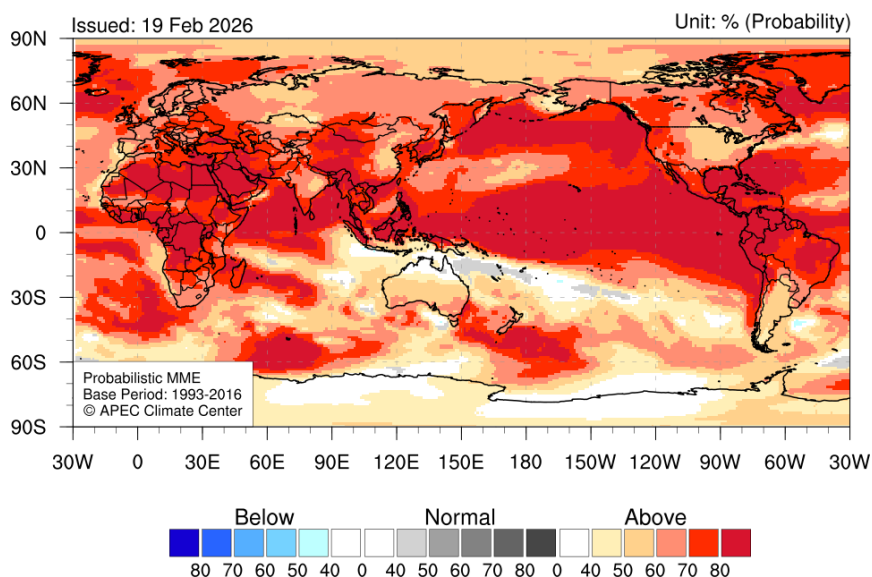
Temperature

- Strongly enhanced probability for above normal temperatures is predicted for **the northeastern Atlantic, Greenland, Mediterranean, Eastern Europe, Middle east, most of Africa, northern Indian Ocean, Southeast Asia, western China, eastern East Asia, North Pacific, western North America, subtropical North Atlantic, Mexico, Caribbean, central America, northern South America and tropical Pacific**. Enhanced probability for above normal temperatures is expected for the **western Europe, Central Asia, Russia, India, Australia, eastern North America, southern South America**.

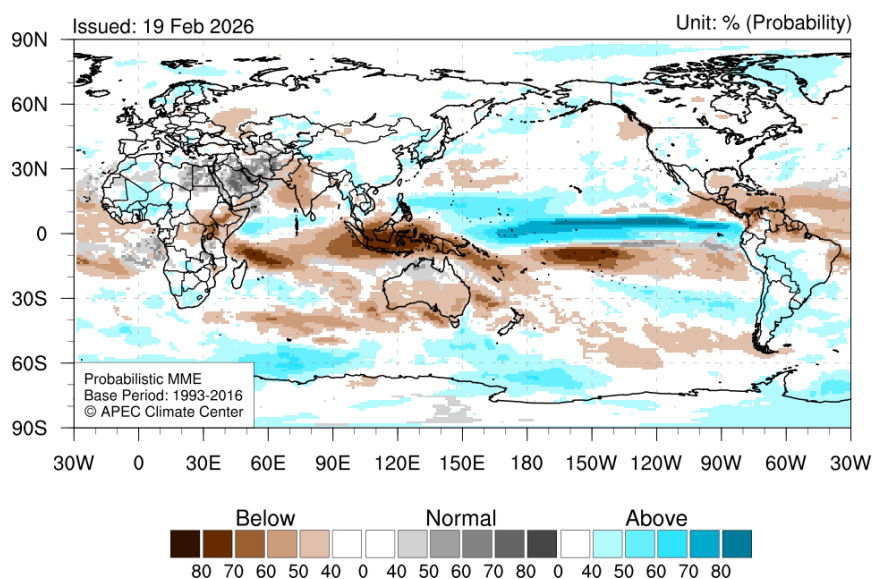
Precipitation

- Strongly enhanced probability for above normal precipitation is predicted for **off-equatorial north Pacific**. Enhanced probability for above normal precipitation is predicted for **tropical western north Pacific**. A tendency for above normal precipitation is predicted for **western Africa, equatorial Indian Ocean, central South America**.
- Enhanced probability for near normal precipitation is predicted for **the Middle East**.
- Strongly enhanced probability for below normal precipitation is predicted for **off-equatorial South Pacific, Maritime Continents, southwestern tropical Indian Ocean, and east Africa**. Enhanced probability for below normal precipitation is predicted for **the India, central America and northern South America**. A tendency for below normal precipitation is predicted for **tropical Atlantic and southern Australia**.

Temperature at 2m for June-August 2026



Precipitation for June-August 2026



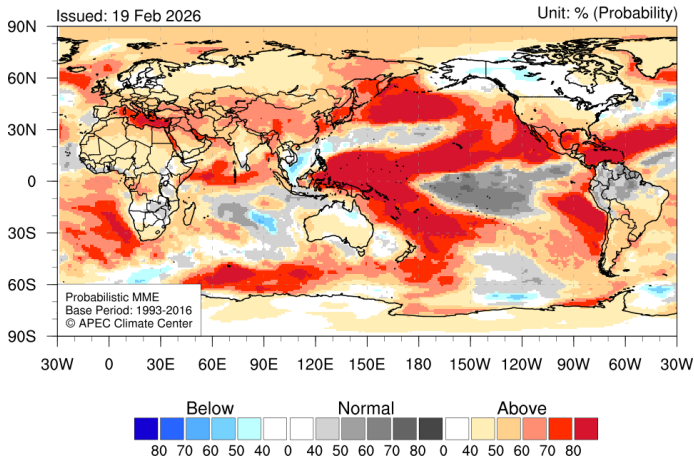
Probabilistic MME forecasts of 2m temperature (top) and precipitation (bottom) for June - August 2026. Normal conditions are computed with respect to the common base period (1993-2016) of participating models in the APCC MME prediction.

Temperature		Precipitation
70% < probability	Strongly enhanced probability for above normal temperatures/precipitation	70% < probability
50% < probability < 70%	Enhanced probability for above normal temperatures/precipitation	50% < probability < 70%
40% < probability < 50%	A tendency for above normal temperatures/precipitation	40% < probability < 50%
70% < probability	Strongly enhanced probability for near normal temperatures/precipitation	70% < probability
50% < probability < 70%	Enhanced probability for near normal temperatures/precipitation	50% < probability < 70%
40% < probability < 50%	A tendency for near normal temperatures/precipitation	40% < probability < 50%
70% < probability	Strongly enhanced probability for below normal temperatures/precipitation	70% < probability
50% < probability < 70%	Enhanced probability for below normal temperatures/precipitation	50% < probability < 70%
40% < probability < 50%	A tendency for below normal temperatures/precipitation	40% < probability < 50%

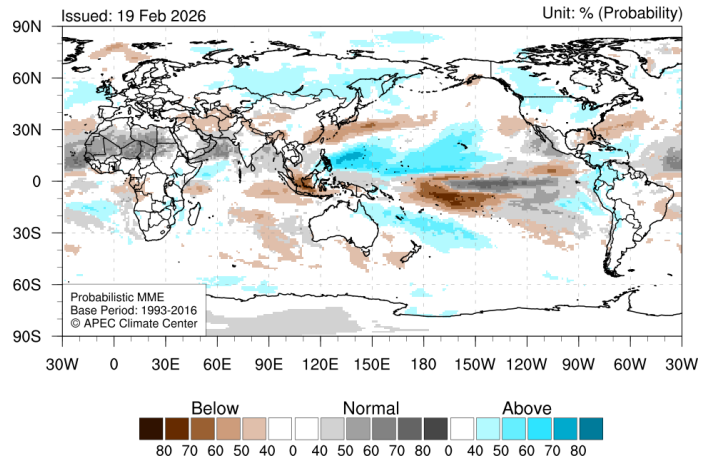
Probabilistic MME forecasts of APCC is described as above

March - May 2026

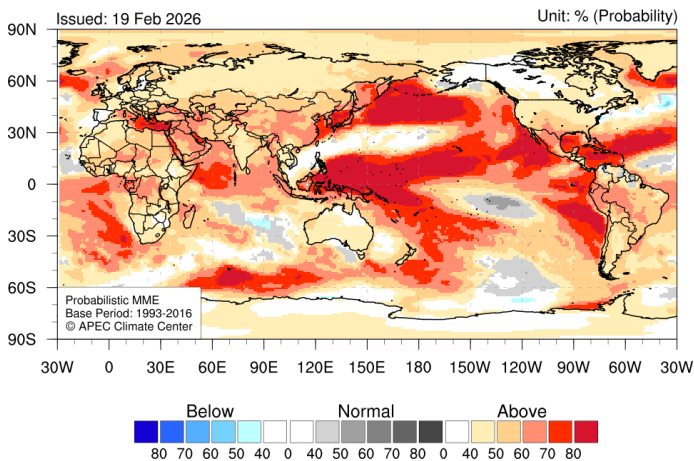
Temperature at 2m for March 2026



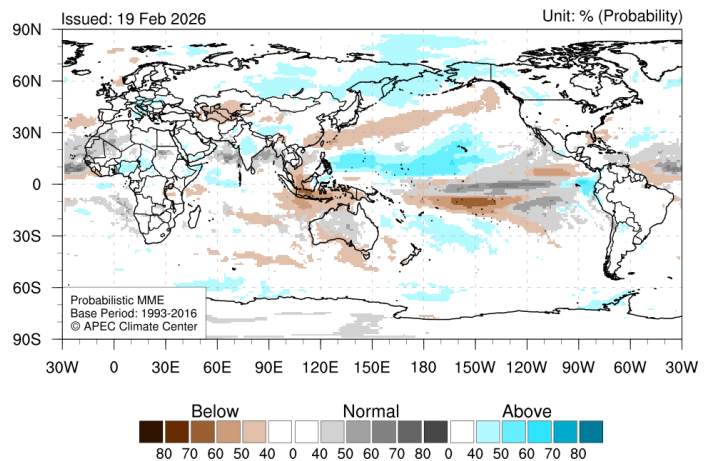
Precipitation for March 2026



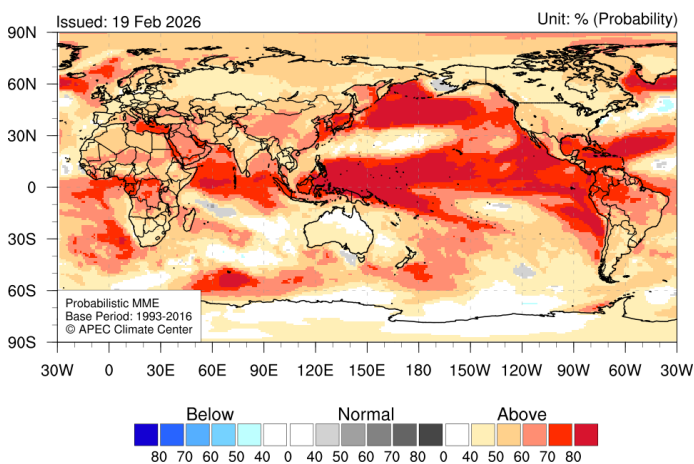
Temperature at 2m for April 2026



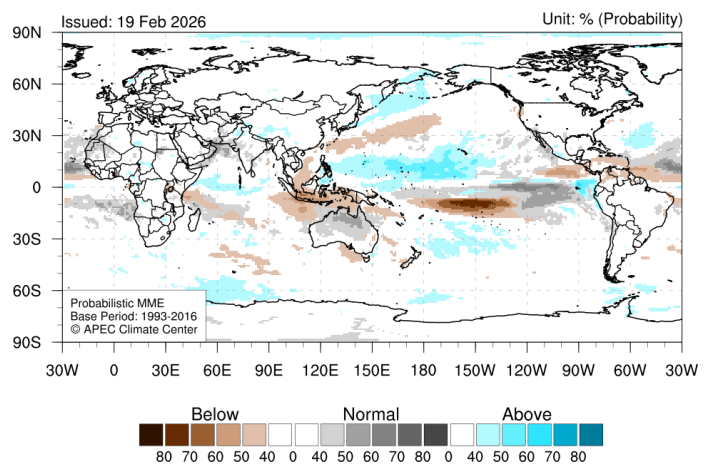
Precipitation for April 2026



Temperature at 2m for May 2026



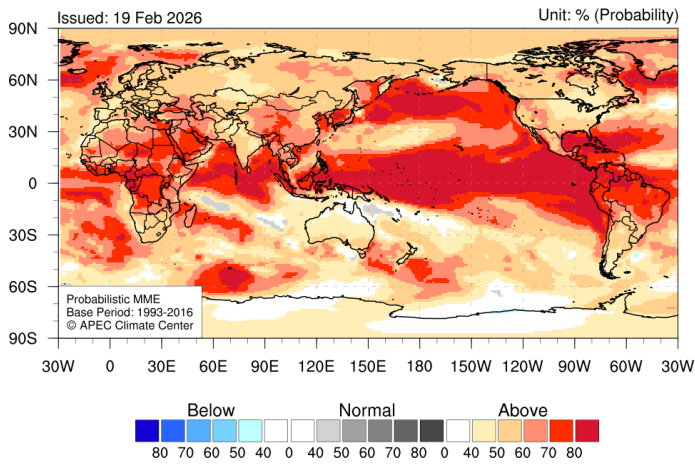
Precipitation for May 2026



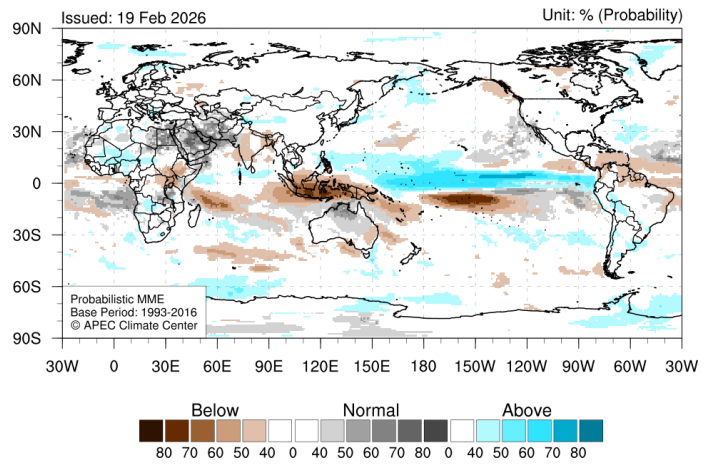
Probabilistic MME forecasts of Monthly 2m temperature (left) and precipitation (right) for March - May 2026. Normal conditions are computed with respect to the common base period (1993-2016) of participating models in the APCC MME prediction.

June - August 2026

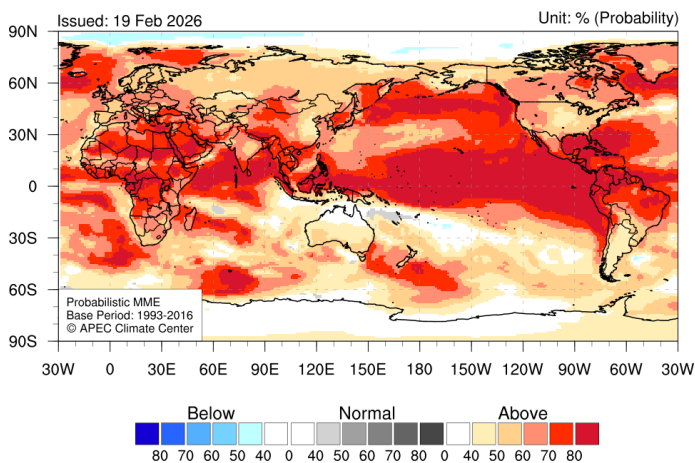
Temperature at 2m for June 2026



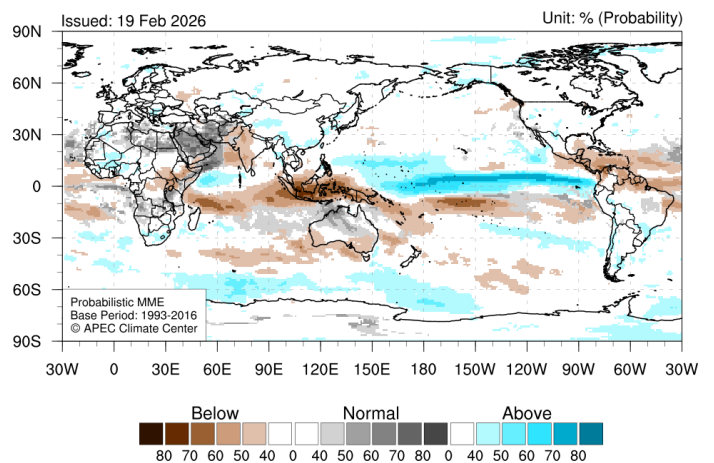
Precipitation for June 2026



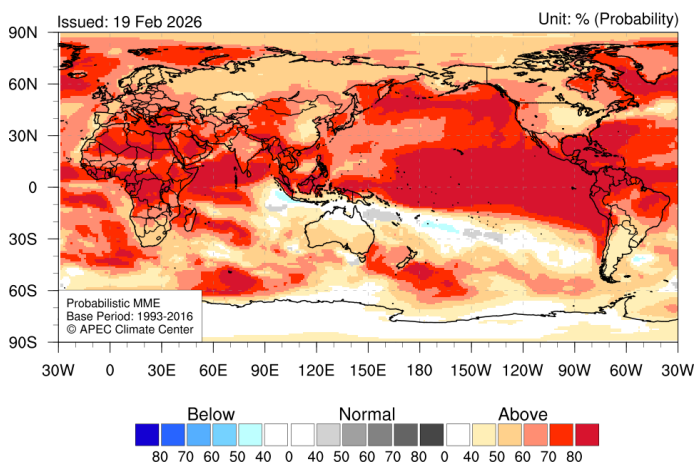
Temperature at 2m for July 2026



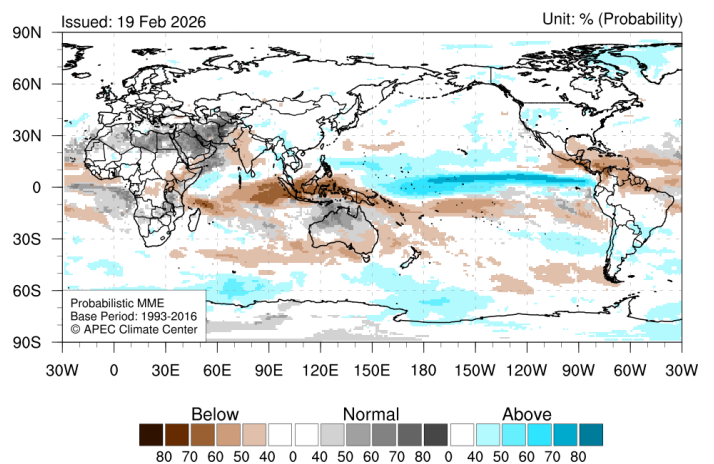
Precipitation for July 2026



Temperature at 2m for August 2026



Precipitation for August 2026



Probabilistic MME forecasts of Monthly 2m temperature (left) and precipitation (right) for June - August 2026. Normal conditions are computed with respect to the common base period (1993-2016) of participating models in the APCC MME prediction.



- More information on current climate conditions is available at <http://www.apcc21.org/monitoring/recent?lang=en>.
- More information on prediction and verification results is available at <http://www.apcc21.org/prediction/global/outlook?lang=en>.
- This outlook is prepared by the Climate Prediction Department in the Climate Services and Research Division, APCC.
- If you would like to subscribe to our Climate Outlook or have any questions, please e-mail mme@apcc21.org.
- The APCC seasonal forecast is produced through a multi-model ensemble method, utilizing climate models from 16 climate forecasting centers and institutions in 11 countries around the world. Our forecast information should be used for reference only. Please consult the respective country's national meteorological service for the official seasonal forecast for that country

Acknowledgements

The APEC Climate Center is a major APEC science facility, which was established in November 2005 during the leaders meeting of the Asia-Pacific Economic Forum in Busan, Korea. The APCC climate forecasts are based on model simulations from 16 prominent climate forecasting centers and institutes in the APEC region. These forecasts are collected and combined using state-of-the-art schemes to produce a statistically 'consensual' forecast. APCC collects seasonal forecasts from 16 institutes in the APEC region: the Australian Bureau of Meteorology (BoM), Environment and Climate Change Canada (ECCC), Beijing Climate Center China (BCC), Central Weather Administration Chinese Taipei (CWA), Météo-France (METFR), Euro-Mediterranean Center on Climate Change Italy (CMCC), Japan Meteorological Agency (JMA), APEC Climate Center Korea (APCC), Korea Meteorological Administration (KMA), National Institute of Agricultural Sciences Korea (NAS), Pukyong National University Korea (PKNU), Hydrometeorological Research Center of Russia (HMC), Voeikov Main Geophysical Observatory of Russia (MGO), Met Office United Kingdom (UK01), National Aeronautics and Space Administration USA (NASA), and the National Centers for Environmental Prediction USA (NCEP).